



311011



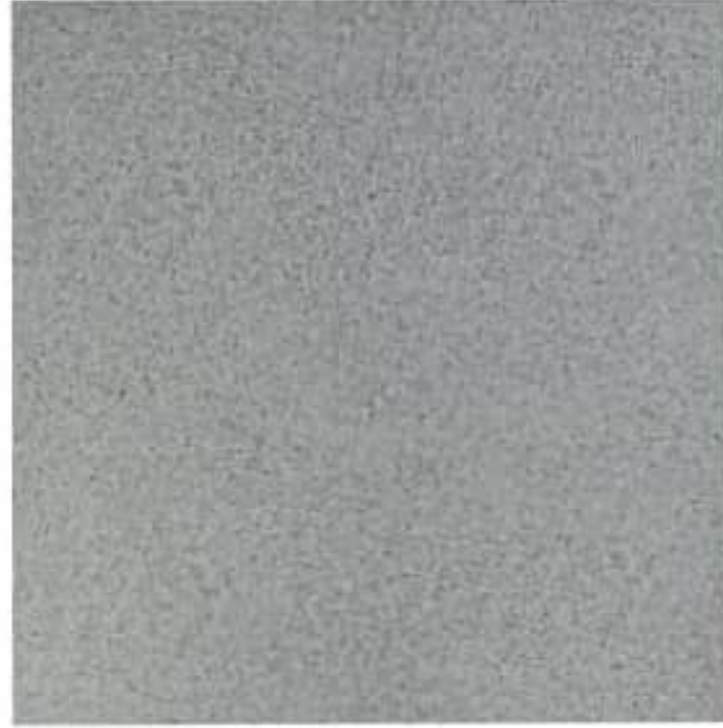
311012



311013



557811



557812



557813



558201



558202



558203



558204

PERFORMANCE CHARACTERISTICS

CHARACTERISTICS	TEST METHOD	METEOR
THICKNESS (mm)	EN 428	2.0
ROLL WIDTH (mtr)	EN426	2.00
ROLL LENGTH (mtr)	EN426	15
WEAR LAYER (mm)	EN 429	≥ 0.25
TOTAL WEIGHT (kgs/sq mtr)	EN 430	3.60 ± 5%
SLIP RESISTANCE	DIN 51130	R9
RESIDUAL INDENTATION (mm)	EN 433	≤ 0.10 mm
DIMENSIONAL STABILITY (%)	IS 3464	≤ 0.40%
MOISTURE MOVEMENT (%)	IS 3462	≤ 0.40%
FLEXIBILITY (mm)	EN 435	40 mm MANDREL. PASS
PERFORMANCE CLASSIFICATION	EN 685	33
ABRASION RESISTANCE	EN: 649 / EN: 660-2	WEAR GROUP P
RESISTANCE TO CHEMICAL	ASTM F925	NO VISIBLE CHANGE
COLOUR FASTNESS TO DAYLIGHT	ISO 105-B02	> BLUE WOOL STANDARD 4
FLAMMABILITY	IS 15061	PASSES

